

CAMR/Angle

The magazine from the Slough, Windsor & Maidenhead branch of The Campaign for Real Ale

Issue 58 - Spring 2020 | www.swm.camra.org.uk

FREE - Please take one



INSIDE THIS EDITION

GASTRO PUBS

Local pubs bring victory to the table

JOIN UP JOIN IN

Out and about with the CAMRA locals

BREWERS NEWS

Days out, tours, festivals and fun

MAIDENHEAD BEER & CIDER FESTIVAL

Maidenhead Rugby Club - 24-25 July.
Scrum on down!

Supporting Real Ale, Real Cider & Real Pubs in East Berkshire & South Buckinghamshire

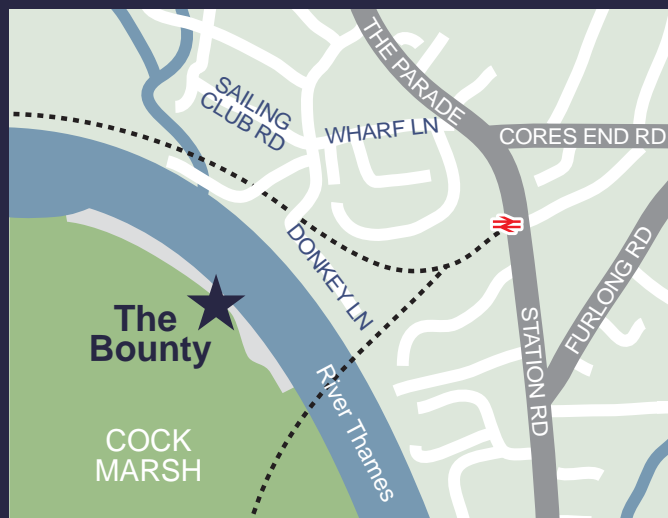
The Bounty



VOTED “BEST CAMRA PUB OF THE SEASON” TWICE!

Located next to the Thames at Cockmarsh. With an outside terrace that stretches down to the river's edge, it's the perfect place to spend some time whilst enjoying a drink or something to eat from the extensive menu.

Full of character and a real family pub where everyone is made to feel truly at home by friendly and helpful staff.



Winter (1st Oct-31st Mar):
Sat & Sun Only: 12.00 noon - Dusk

**OPENING
TIMES**

Summer (1st Apr - 30th Sept):
Every Day 12.00 noon - 11.00pm

Cock Marsh - Bourne End - SL8 5RG - 01628 520056 -



www.thebountypub.com

FROM THE EDITOR



Good news came recently from the Office of National Statistics (ONS). After years of pub closures, the number of pubs and bars is now on the increase, up by 315 openings between 2018 and 2019, the first increase for a decade.

Food is playing a big part in this revival, so it's a great honour to introduce five local pubs who have reached the Top 50 of this year's Best Gastropubs - and deservedly so, as you'll see on pages 7-8 in this issue.

More good news from the SWM CAMRA Branch comes with the recognition of the good work being done by pubs to foster community spirit and encourage social interaction. One local pub in particular, The Crauford Arms, has been applauded for its role in bringing together some of the more isolated members of the community. (More on pages 4-5.)

The White Hart, Holyport, has also picked up an Award for 'an outstanding contribution to the Real Ale & Cider scene'. The pub acts as a social hub for the village and holds a Summer beer festival every year. (See page 5 for more details.)

Finally, on the topic of Beer Festivals - close to my heart! - we're delighted to announce that the 2020 Maidenhead

Beer Festival will take place on July 24-25. This year we have a change of venue thanks to extensive building works taking place at our traditional home, Desborough College. The Beer Festival is less than a 10 minute walk from Maidenhead Station (just over 7 minutes to be precise, according to the RAC!) and will be held at Maidenhead Rugby Club. So a big date for the diary - scrum on down and hope to see you there!

Sean Ferris
Editor

PS: Sadly this is my last issue of editing CAMRA Angle due to work commitments, so thanks to my colleagues at SWM CAMRA Branch and all the many contributors. What a thoroughly enjoyable two years this has been and the team and I will be raising a pint to our new Editor who we'll announce in the next issue. Watch this space!

SUBSCRIPTION

We now offer the facility of posting the quarterly magazine to your home. Contact the Editor with your address details along with a cheque for £5 (payable to CAMRA SWM) to cover the postage, and leave the rest to us!

Family brewers since 1980!

A range of **award-winning** draught and bottled ales to sample and takeaway!

Brewery tours every week!*

*except for late November & December

BUY ONLINE
www.chilternbrewery.co.uk

CAMRANGLE

Editor

Sean Ferris - editor@swm.camra.org.uk

Contributors for this Edition

Paul Beardsley, Tracey Bottomley, Sean Ferris, Dave Heyward, Ingvar Lagerstedt, Justin O'Regan, Caroline Scoular, Anthony Springall, Allan Willoughby

Advertising

Quarter Page - £85.00

Half Page - £145.00

Full Page - £260.00

Inside Front/Back - £280.00

Back Cover - £300.00

Contact Neil Richards MBE at Matelot Marketing 01536 358670 / 07710 281381. E-Mail: N.Richards@btinternet.com

Printed by CKN Print Ltd, 2 North Portway Close, Round Spinney, Northampton. NN3 8RQ. 01604 645555

©CAMRA 2020 - Articles represent the views of the contributors and not necessarily those of CAMRA Ltd. Other media are free to reproduce articles, provided that they acknowledge the source.

Citizens Advice consumer helpline: 03454 040506

Textphone: 18001 03454 04 05 06

Monday to Friday, 9am to 5pm

Circulation: 5000 copies

Estimated readership: 6000

Economies of ale

The UK pubs and bars sector may be bouncing back after years of net closures, according to latest data from the Office of National Statistics (ONS). This year's data has shown a net increase in small pubs and bars for the first time in more than 15 years and the highest levels of real turnover since the end of the financial crisis of 2007 to 2008.

The data shows that the number of small pubs and bars (i.e. those with fewer than 10 employees) increased by 85 (a 0.4% increase) in 2019. This follows more than 15 years of closures. The overall number of pubs and bars in the UK increased by 315 (a 0.8% increase) between 2018 and 2019, the first increase for a decade.

Food is playing its part in the revival with the ONS reporting that pub and bar enterprises now employ more people serving food than people working behind the bar. In 2003, bar staff made up roughly 4 in 10 employees and those serving food (chefs, cooks, waiting staff, and kitchen and catering staff) made up roughly 3 in 10 employees. Since 2016, the opposite has been true, with those serving food outnumbering those working behind the bar.

PUB CLOSURES (LOCAL) 2001- 2019

RBWM - 145 pubs down to 100 (-31 %)

Slough - 50 pubs down to 25 (-50 %)

South Bucks - 65 pubs down to 55 (-15 %)

Branch Social at spooktacular new Brewery and Tap Room



Just the way to dispense with those mid-winter blues! Phantom Brewery held its first open-day having opened for business on 23, November last year.



hosting a great line-up of guest brews.

"In all, well worth a visit," said Allan. "Be sure to have a look at the list of socials organised by your local branch; there's bound to be something that takes your fancy!"

Phantom Brewery can be found at Unit 3, Meadow Road, Reading, England RG1 8LB. Located a 10-minute walk from Reading Station, the tap room is open on Fridays from 3pm - 10pm and on Saturdays from 1pm - 10pm.

- For more social events visit SWM's Branch Diary on pages 14-15.



KEEP FIT & ENJOY BEER AT THE SAME TIME!

SUNDAY, 15 MARCH

The Hedgerley Real Ale Ramble has been held on a quarterly basis for more than 10 years and is a great way to keep fit and enjoy some excellent beers and good company at the same time. The walk covers about eight miles and takes in The Blackwood Arms, Jolly Woodman, The Royal Standard at Wooburn Common and The White Horse in Hedgerley (in that order).

We meet at Hedgerley Pond, which is very near the White Horse, at 10.00am and then take a scenic route which varies from walk to walk to keep things interesting for regular participants. Lunch is optional and is taken at the Royal Standard before returning to the White Horse around 4.30pm.

Between them these pubs have around 25 different real ales for our thirsty walkers to savour, more than enough to keep anyone happy!

For more details on the Ramble visit:

<https://swm.camra.org.uk/viewnode.php?id=49865>



Local tackles loneliness



Community pub The Craufurd Arms, Gringer Hill, Maidenhead, has been recognised by CAMRA for its role in tackling loneliness.

CAMRA has launched a campaign which aims to

highlight the work that pubs do to foster community spirit and encourage social interaction.

As well as morning drop ins, the Maidenhead pub opens its doors to an autism group which runs coffee mornings

and social evenings for parents and carers of children and young adults with autism. The Maidenhead Memory Group also plans to host monthly meetings at the pub, bringing together more isolated members of the community.



- *Has your local pub helped you make friends in your area? Or improved your mental health and wellbeing in some way? Spread the word – you can email us or share on social media using the hashtag #mypubstory*

White Hart wins Keith Smith Award



The White Hart, Holyport, has picked up the 2020 Keith Smith Award. Keith was a very active member of the branch CAMRA team and a prolific collector of apples destined for Salt Hill Cider, a Slough based award-winning

cider maker. Keith sadly passed away in 2016 and to commemorate his life the local team created an award in his name that would reflect an outstanding contribution to the Real Ale & Cider scene. The award is presented annually and celebrates its third anniversary this year.

The White Hart's Landlord's Michelle and Bernard have run the pub for more than 10 years and are truly dedicated to the promotion of Real Ale and Cider. The pub acts as a social hub for the village and holds a Summer beer festival every year.

Pictured are Bernard on the left (he's the one that looks after the ales) and Branch Chairman, Steve (he's the one that drinks them) at the presentation held in late January.

<http://www.thewhitehartholyport.co.uk>

- *Do you have a local hero running your pub? Drop the Editor a line with details and who knows there may be an Award heading their way.*

Fox & Hounds proves top dog

The Fox & Hounds, Theale, has been named the winner of the Dog Friendly Pub of the Year Awards 2019.

Landlady Jayne Tilsey at the 'Barkshire' pub said: "Being dog friendly is the best part of my day. We

love meeting new woofers, and getting to fuss them. It's a great way to start a conversation, and the endorphins that come from fussing a dog are what we all strive for."

The Fox & Hounds is no stranger to victory, having first won the Dog Friendly Pub of Year title in 2017.



The pub offers dog walks, a doggy photo booth and a special dog menu which includes a full three-course meal. It also caters for the quieter canine with a quiet corner for dogs who don't like to be disturbed by the coming

and goings.

The Awards are run by Rover, one of the largest network of pet sitters and dog walkers in the world.

www.foxandhoundstheale.co.uk

UK's Top 50 Gastro Pubs revealed



Five local pubs have reached the Top 50 of this year's 50 Best Gastropubs, three of which are SWM Branch Real Ale pubs. Congratulations to Real Ale pubs The Crown, Burchetts Green (Number 18), The Beehive, White Waltham (Number 25) and The Royal Oak, Paley Street (Number 46).

Slightly further afield, and celebrity Chef Patron Tom Kerridge (picture left) saw both of his Marlow pubs soar to the top of the listings.

- *See pages 7- 8 for more details.*



WHITE HORSE

Kevin and Janet invite you to the White Horse



Easter Mini Festival

10th - 13th April

Annual Beer Festival

22nd - 25th May

8 Real Ales
2 Craft Ales
3 Draught Ciders

Beer Garden
Food Available

01753 643225

Village Lane, Hedgerley. SL2 3UY



QUEEN CHARLOTTE

WINDSOR

6 Cask Beers, over 50 different
Gins including our very own
Guildhall Island Gin

Private meeting/Dining rooms
available for hire

Delicious food served all day

Twitter @QCWindsor
Facebook Queen Charlotte, Windsor

www.queencharlottewindsor.co.uk

7 CHURCH LANE, WINDSOR
BERKSHIRE. SL4 1PA



THE SHIP
MARLOW

WWW.THESHIPMARLOW.COM



Established in 1580, The Ship is Marlow's oldest pub. Serving some of the best Beer, Ales, Cider and Spirits around, we do our best to make sure every visit is a pleasureable one.

Our dedicated staff are on hand to make sure you feel at home.

Whether that's watching Sky/BT Sport on our 5 indoor screens, relaxing by the fire over a craft ale, or lounging on the largest deck on Marlow.

We have been serving generations of Marlovians and visitors to this great town and we look forward to seeing you soon.

23 West Street, Marlow, SL7 2LS

Tel: 01628 484360

CAMRA PUBS BRING VICTORY TO THE TABLE

Congratulations to three local SWM Branch Real Ale pubs for reaching the Top 50 of this year's Estrella Damm 50 Best Gastropubs. With success clearly on the menu, we're delighted to present them in all their culinary glory.

SWM BRANCH REAL ALE PUBS

THE CROWN, Burchetts Green



Number 18



Congratulations to Simon Bonwick, owner and chef of The Crown, Burchetts Green. The pub has been ranked at **Number 18** in the 50 Best Gastropubs 2020. Not only that, but it has also received Michelin's Welcome & Service Award 2020.



"After making its debut on the Top 50 Gastropubs list in 2016, the Crown has gone from strength to strength, winning

a Michelin star for Bonwick's lavish cooking and is now deservedly celebrating its fourth year on the Top 50 list," says the guide.



For mains, expect dishes such as Black Rock Roast Cod with Watercress and Horseradish, Salt Marsh Lamb Rump with Chestnut and Thyme cooking juices and Venison braised for ages and popped

in a pie with Rowanberry Sauce. Desserts include the likes of Black Forest Cadeau, Pistachio Charlotte with Sauce Pistache, and Tarte Tatin of Apples.

But despite being named among some of the top eateries in the country, says the guide, The Crown is very much still a pub: "Local ales and lagers adorn the bar and the wine list showcases an extensive range of independent producers from numerous regions."

THE BEEHIVE, White Waltham



Number 25

The Beehive's extensive menu includes Line Caught Cornish Sea Bass, Peppered Haunch of Wild Hart Venison, and Hereford Bavette Steak, along with daily specials, such as Hungarian Beef Goulash with Creamed Potatoes, Beetroot, Crème Fraiche & Dill and a 10oz Rib of Hereford Beef with Triple Cooked Chips, Green Beans, Melted Onions & Red Wine Sauce.

Dominic Chapman and his wife Helena took charge at The Beehive, White Waltham, in August 2014. Their aim is to welcome visitors to their relaxed and friendly country pub and eating house.

Dominic has achieved a host of awards as a chef and The Beehive is his first venture as Chef/Patron of a restaurant/pub. Both are hugely passionate about the Beehive and have created a special place for locals to enjoy and for people looking for a delicious plate of British seasonal food.

The couple have been living and working in Berkshire for 15 years; they met whilst working at Kensington Place in London's Notting Hill in 2001.

Helena moved to Oakley Court near Windsor where she worked as the wedding and events Manager. Helena's

role at The Beehive is administrative, plus creating the ambience.

Helena's sister, Alicia Corlett, and her team will give you a warm welcome at The Beehive. Alicia is an experienced Front of House Manager, having worked in many of London's most fashionable and favourite restaurants before joining The Beehive in 2014.

The Chef

Dominic's hereditary passion for food stems from the highly acclaimed Castle Hotel in Taunton, which his family have owned and run for over 65 years.

Dominic has an abundance of invaluable experience. His training has seen many great kitchens around the world, in particular, one of London's most fashionable restaurants, Kensington Place. Having spent 10 years in London, he then moved to Berkshire and the Fat Duck, eventually to open and take up the role of Head Chef at Heston Blumenthal's Hind Head in Bray.

In January 2007, Dominic moved to The Royal Oak Paley Street (In at number 46, see right). In 2008 Dom's passion in the kitchen gained the Royal Oak a Michelin Bib Gourmand. The Royal Oak was awarded a Michelin star in January 2010, 6/10 in the good food guide and 3 AA Rosettes. Then in August 2014, Dominic became Chef/Patron of The Beehive.

www.thebeehivewhitewaltham.com



THE ROYAL OAK, Paley Street, Berkshire



Ballotine of Pheasant with Truffle Mousse, Pork and Leek Pie with Mash and Gravy, Roasted Halibut, White Beans, Celery, Lemon Meringue Tart with Buttermilk Ice Cream and Clementine Parfait with Fig Sorbet are among the offerings on The Royal Oak's varied menu.

The pub uses seasonal ingredients and, says owner Nick Parkinson, dishes are not 'lost in over complicated cooking methods or compromised by unnecessary ingredients'. There are separate Vegan/Vegetarian and Children's Menus.

"We believe that food is for enjoyment and our goal is that everyone who dines with us leaves with a feeling of satisfaction, having had a wonderful culinary experience and looking forward to the next time," says Nick.



WHAT'S HAPPENING AT YOUR LOCAL PUB OR BREWERY?

Any beer related stories to tell? Send them to editor@swm.camra.co.uk. It's your mag!

FOLLOW US & LIKE US ON SOCIAL MEDIA



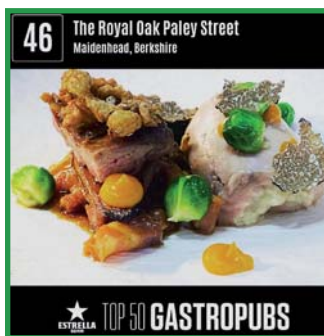
Slough, Windsor & Maidenhead CAMRA
Maidenhead Beer & Cider Festival



@swmcamra
@MaidenheadBeer



Maidenheadbeerandcider



Nick and his father Sir Michael Parkinson first set eyes on The Royal Oak in 2001. Nick bought it in 2001 and opened in July the same year. In 2008 the team gained a Michelin Bib Gourmand. Two years later it attained the acclaimed Michelin star, which it held for eight years across three different chefs.

www.theroyaloakpaleystreet.com

AND IN NEARBY MARLOW...

CONGRATULATIONS ALSO TO CHEF-PATRON TOM KERRIDGE

THE HAND & FLOWERS, Marlow



Number 12. Tom Kerridge's pub The Hand & Flowers, Marlow, which opened in 2005 and holds two Michelin stars, reached Number 12 on the list, offering up a menu which ranges from Pork Belly with Mini Apple Tatin, Roast Parsnip, Mustard Butter and 'Pork a Laise' Sauce to Milk Toffee Tart with 'Old English Spice' and Roasted Grapefruit Sorbet.

www.thehandandflowers.co.uk

(Tom, pictured above and below during filming of his latest TV series, aired in January and February 2020.)

THE COACH, Marlow



Number 5. In a well-deserved double whammy for Tom, his second Marlow outlet, The Coach, reached Number 5 in the rankings. The Coach operates on a first-come-first-served policy, so just drop in for a chance to sample a Wild Boar Lasagne with Parmesan and Lemon, or maybe a Whole Stuffed Rotisserie Quail with Haggis and Turnip followed by a Chocolate and Orange Pudding with Marmalade Ice Cream.

www.thecoachmarlow.co.uk

The list of the UK's best eating and drinking establishments is voted for by food writers, critics and gastropub chefs.

www.top50gastropubs.com





ALES FROM THE RIVERBANK





**On the Towpath, Bridge St,
Staines-upon-Thames, TW18 4TG**

**INTRODUCING THE THAMES SIDE BREWERY TAP
AND RIVER VIEW LOUNGE - ONLY 50 METRES
UPSTREAM FROM STAINES BRIDGE**

- Two riverside bars serving a constantly changing selection of award-winning ales brewed on site
- Selected wines, craft lagers, ciders and soft drinks
- Hot bar food, including locally-made pies
- Open all day, Wednesdays to Sundays
- Calendar of regular events, including live music from local musicians
- Venue can be hired for private parties





www.thamesidebrewery.co.uk

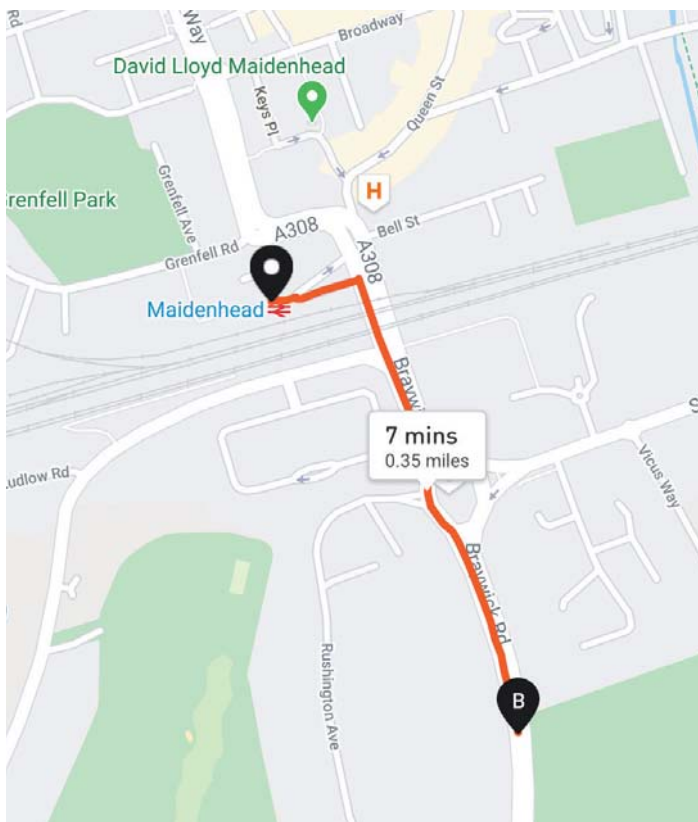
SCRUM ON DOWN TO MAIDENHEAD RUGBY CLUB

New home for 2020's Maidenhead Beer & Cider Festival

After Desborough College informed us that they were unable to host the 2020 Beer & Cider Festival due to extensive building work during the summer holidays we set about finding a new home for this year's festival. And the good news is? Festival Organiser Allan Willoughby explains.



The brief for the new 2020 venue was very clear. It was essential that we had plenty of green space, that the venue would be family friendly and, most importantly, it would have good public transfer links. And we got it! Welcome to Maidenhead Rugby Club!



Maidenhead Rugby Club is situated on the Braywick Road in a rapidly up and coming district of the town. The Braywick Leisure Centre opens in September with the seamless closure of The Magnet and Park and Ride facilities will be available (although probably not in time for our festival on July 24-25). Maidenhead United Football Club is also scheduled to move next door in the near future, and there's a friendly Toby Carvery next door plus plenty of parking. The Clubhouse itself is less than a 10 minute walk from Maidenhead train station.

Chris Brown, the Royal Borough Town Crier will open the festival giving his witty Festival Proclamation to kick things off. We are planning to have around 50 beers (cask and keg) and 20 ciders.



As you would expect there will be plenty of excellent food on offer along with great entertainment thrown in. Besides plenty of green spaces there is a 300-seater grandstand that should protect us from extremes of weather...the heat of last year still gives me nightmares!

Independently run, leading providers to the building, plumbing and electrical trades, Grant & Stone will, once more, be sponsoring our festival. We welcome enquiries from pubs, breweries and other businesses if you would like to get involved with supporting this annual event.



Keep an eye on Social Media and the festival website, www.mbcf.camra.org.uk, as our plans unfold. For CAMRA members, we hope those who volunteered last year will volunteer again, and for those that didn't, please do give it a go. No matter how much time you can spare, during the festival or build-up or take-down, you will be fed and watered and it's a fantastic event to be part of. Look out for the volunteers' form which will be uploaded to the website around a month before the event.

Looking forward to seeing you all in July!

Allan Willoughby
Festival organiser

THE BARLEYCORN



7 Real Ales

Up to 10 Ciders

Slough, Windsor &
Maidenhead CAMRA
Cider Pub of the Year
2018 & 2019

In the last 4 years
Good Beer Guide

EASTER CIDER FESTIVAL 10TH - 13TH APRIL

LIVE
MUSIC
FRI, SAT
& SUN

BOUNCY
CASTLE
HOG ROAST
BBQ



WWW.THEBARLEYCORN.PUB.CO.UK

LocAle

Local Brewery Listings

BREWERY	MILES*
Ascot Ales, Camberley	15
Bell Street Brewery, Henley-on-Thames	12
Binghams Brewery, Ruscombe	8
Bond Brews, Wokingham	12
Ealing Brewing, Brentford	19
Elusive Brewing, Wokingham	15
Fisher's Brewing, High Wycombe	11
Haresfoot Brewery, Chesham	18
Hedgedog, Virginia Water	13
Loddon Brewery, Dunsden	12
Lovibond's Brewery, Henley-on-Thames	9
Malt The Brewery, Great Missenden	15
Moogbrew, Taplow	3
New Wharf Brewing; Brewing Paused	3
Old Luxters Farm Brewery, Hambleden	12
Old Windsor Brewery, Old Windsor	9
Paradigm Brewery, Sarrett	18
Rebellion Beer, Marlow	7
Reunion Ales, Feltham	17
Siren Craft Brew, Finchampstead	15
Stardust Brewery, White Waltham	4
Thames Side Brewery, Staines-upon-Thames	13
Tiny Vessel Brewing, Hampton	20
Thurstons Brewery, Horsell	17
Twickenham Fine Ales, Twickenham	19
Weird Beard Brew, Hanwell	19
Windsor & Eton Brewery, Windsor	6

**from Maidenhead Station*

THE WINDSOR TROOPER

97 St Leonards Road. SL43BZ

UNDER NEW MANAGEMENT

FROM THE TEAM THAT BROUGHT YOU
THE MERMAID IN ST ALBANS

SOUTH HERTS PUB OF THE YEAR 2017

SOUTH HERTS CIDER PUB OF THE YEAR 2013 TO 2019



5 GUEST ALES
2 ROTATING CRAFT ALES
12 REAL CIDERS
15 BOTTLED BELGIAN BEERS

NEW PUB GRUB MENU

FUNCTION ROOM FOR HIRE

9 ROOMS AVAILABLE



CAMRA LocAle 2020 Pub Listings

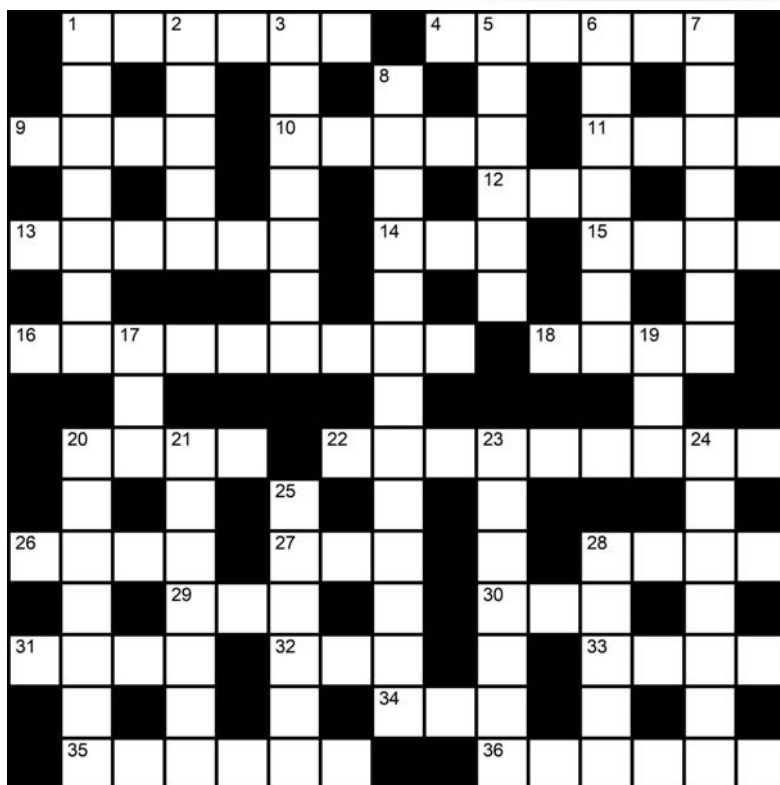
- Acre – Windsor
- A Hoppy Place - Windsor
- Barleycorn – Cippenham
- Barley Mow – Cox Green
- Bear - Maidenhead
- Bell & Bottle – Littlewick Green
- Bexley Arms – Windsor
- Boatman - Windsor
- Boulters – Maidenhead
- Boundary Arms – Pinkneys Green
- Bounty – Cookham
- Conservative Club – Maidenhead
- Corner House - Windsor
- Crauford Arms - Maidenhead
- Drew Drop Inn – Hurley
- Duke of Connaught - Windsor
- Fox & Castle – Old Windsor
- George Inn – Eton
- George on the Green - Holyport
- Green Man – Denham
- Greyhound – Eton Wick
- Horse & Groom – Windsor
- Hurley House Hotel - Hurley
- Jolly Farmer – Cookham Dean
- Jolly Woodman – Littlewick Common
- Kings Arms – Cookham
- Maiden's Head – Maidenhead
- Moon & Spoon - Slough
- Norden Farm Cafe & Bar – Maidenhead
- Oak & Saw - Taplow
- Old Windsor Club – Old Windsor
- Pinkneys Arms – Pinkneys Green
- Prince Albert – Windsor
- Prince Harry – Windsor
- Queen Charlotte - Windsor
- Rising Sun – Hurley
- Rose - Maidenhead
- Royal Stag – Datchet
- Shire Horse – Littlewick Green
- Stag & Hounds – Farnham Common
- Swan – Clewer Village
- Uncle Tom's Cabin - Cookham Dean
- Watermans Arms – Eton
- White Hart – Moneyrow Green
- White Horse – Hedgerley
- Windlesora – Windsor
- Windsor & Eton Brewery Tap Room - Windsor

QUIZ CORNER

Welcome to Quiz Corner. Test out your beer prowess on our beer-themed cryptic crossword



You'll find the answers on page 23



ACROSS

- 1 Surely this drink won't make you acrimonious? (6)
- 4 Force singer, say, to have spirited stuff! (6)
- 9 Semi-retired, bathing in mud. (4)
- 10 Horsey feet from a heave-ho, of sorts. (5)
- 11 Fermenting stuff to row back from the junction. (4)
- 12 Pull-out from ready-to-wear section. (3)
- 13 Inn described in the "magenta vernacular"? (6)
- 14 Distant part of the safari park. (3)
- 15 Go at six to dig out cereal for beer?
That's a bit thick! (4)
- 16 Ornaments that were made from jelly. (9)
- 18 He's sure to be an exploiter. (4)
- 20 Jumps into beer-makers' list! (4)
- 22 Ferret-men trying to fool a brewer. (9)
- 26 Hydrocarbon radical affecting family,
if not included. (4)
- 27 It's mine to tip back! (3)
- 28 Old sherry to be hit at bedtime? (4)
- 29 Personal boomerang post? (1.1.1)
- 30 Headwear that's in little backstreet. (3)
- 31 Interplanetary part of strategy. (4)
- 32 Woman of habit? (3)
- 33 Jumbo Boeing's instrument not in panel. (4)
- 34 Beginning to have a short enclosure. (3)
- 35 Arbitrarily arrest the French thinker. (6)
- 36 Water channel in force, say. (6)

DOWN

- 1 Crudely abridge the army unit. (7)
- 2 He set about making the ones over here. (5)
- 3 Turning on a lathe, it could make your head spin! (7)
- 5 Platforms going to and fro? Strange content! (6)
- 6 Talks that go with amazing wallops? (3,4)
- 7 Rare oat brew that can put the wind up? (7)

- 8 Freon, say, too tempting, perhaps, but that's a way to brew! (3,10)
- 17 Which is the one from the World Health Organisation? (3)
- 19 Take in in the heat of the moment. (3)
- 20 Can you hop like a Roman? (7)
- 21 Not the 'real McCoy' drunk in liners in a quiet storm. (7)
- 23 Shaming display in brewing process? (7)
- 24 Just like every individual, he can paddle his own canoe. (4,3)
- 25 First comment used before pouring? (6)
- 28 Hardy sort of drink? (5)

ASSET OF COMMUNITY VALUE (ACV) PUBS IN OUR BRANCH SLOUGH COUNCIL

- The Herschel Arms, Slough

SOUTH BUCKS COUNCIL

- The Bull, Iver - currently boarded-up
- Rose & Crown, Stoke Poges

WINDSOR & MAIDENHEAD

- Golden Harp, Maidenhead - now a Tesco Express
- Fifield Inn, Fifield
- Crown, Burchetts Green
- Craufurd Arms, Maidenhead
- Dew Drop Inn, Hurley
- Boundary Arms, Pinkneys Green
- Jolly Farmer, Cookham Dean
- Ye Olde Red Lion, Oakley Green
- Old Swan Uppers, Cookham
- Uncle Toms Cabin, Cookham Dean
- North Star, Maidenhead
- The Swan, Clewer

BRANCH DIARY

MORE INFORMATION



For more information on CAMRA activities in the area contact Social Secretary Tracey Bottomley

e. social.sec@swm.camra.org.uk
t.07917 564194

Both CAMRA members and non members are welcome to all our Social Events. Branch Meetings are for members only. Please check website for any last minute changes and for more details on Beer Festivals. Please contact Tracey on 07917564194 our Social Secretary if you have any questions. QR code above.

MARCH

11 - Wednesday

7.30 pm. Branch Meeting at The Boundary Arms, Pinkneys Green, Maidenhead. All CAMRA members welcome.



14 - Saturday

1pm. Reading Pub walk held by Steve. Starting at the Fisherman's Cottage.



28 - Saturday

1pm. Marlow Pub walk held by Paul. Starting at the Marlow British Legion.

25 March – 5 April

National Wetherspoons Ale Festival.

APRIL

3 - Friday

7pm. Weatherspoon's Social Windsor Starting at The King & Castle then The Windlesora held by Paul.



8 - Wednesday

7.30pm. Branch Meeting at The Maiden's Head, Maidenhead. All CAMRA members welcome.



10 – 13 Friday - Monday

White Horse Hedgerley Beer Festival.



11 - Saturday

1pm. Social at the White Horse Hedgerley held by Steve.

18 - Saturday

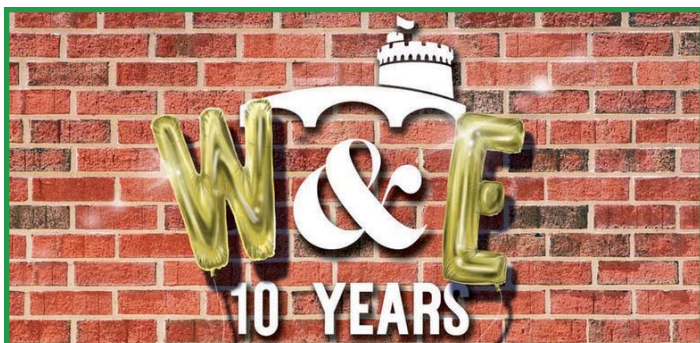
10.30am. Kent Micro Pub Tour held by Alan. Meet at St Pancras Main Ticket Office.


21 - Tuesday

6pm. Social at A Hoppy Place held by Naomi.


24 - 25 Friday - Saturday

6pm (Friday); 9pm (Saturday). Windsor & Eton 10th Birthday Beer Festival.


25 - Saturday

12 noon. Wokingham Pub Walk, starting at The Station Tap, hosted by Clive from Berkshire South East Branch.


28 - Wednesday

7.30pm. Social planning Meeting at The Moon and Spoon, Slough. All CAMRA members welcome.

MAY
1 - Friday

6.30pm. Social at Windsor and Eton Brewery with Paul.

7 - 10 Thursday - Sunday

Egham Beer Festival, Egham United Services Club.


8 - Friday

1pm. Egham Beer Festival Social held by Alan.

13 - Wednesday

7.30pm. Branch Meeting at The Rising Sun, Hurley. All CAMRA members welcome.


16 - Saturday

1pm. Cookham to Bourne End Pub Walk, starting at The Old Swan Uppers, Cookham held by Paul.



22 – 25 Friday - Monday

Beer Festival. The White Horse, Hedgerley.

23 - Saturday

1pm. Social at The White Horse Hedgerley held by Steve.

28 – 30 Thursday – Saturday

Society of Preservation of Beer From The Wood (SPBW) Festival.

29 - Friday

6pm. SPBW Festival at The Turks Head, Twickenham, Social held by Paul.



JUNE

6 - Saturday

2pm. Thames Side Brewery, Staines. Joint Social with Berkshire South East CAMRA Branch held by Tracey and Clive.



10 - Wednesday

7.30pm. Branch Meeting at The White Hart, Moneyrow Green. All CAMRA members welcome.

12 – 13 Friday – Saturday

Twyford Beer Festival.

12 - Friday

5pm Social at Twyford Beer Festival held by Philip and Tracey.

13 - Saturday

1pm Social Twyford Beer Festival held by Paul.

15 - Monday

7pm Social at The Craufurd, Maidenhead held by Tracey.



15 - Monday

Beer Day Britain – Raise a pint and “Say Cheers to Beer”.

19 – 21 Friday - Sunday

Beer Festival at The Perseverance, Wraysbury.



19 - Friday

1pm. Social at The Perseverance held by Alan.

20 - Saturday

1pm. Social at The Perseverance held by Steve.

WHAT'S HAPPENING AT YOUR LOCAL PUB OR BREWERY?

Any beer related stories to tell? Send them to editor@swm.camra.co.uk. It's your mag!

FOLLOW US & LIKE US ON SOCIAL MEDIA



Slough, Windsor & Maidenhead CAMRA
Maidenhead Beer & Cider Festival



@swmcamra
@MaidenheadBeer



Maidenheadbeerandcider

BEER ABBREVIATIONS AND ACRONYMS

Like any industry, brewing has developed numerous acronyms and abbreviations. Check out some of the most frequently used below.

AAU – Alpha Acid Unit.

A measurement of the bitterness within the beer caused by the alpha acids in the hop variety used.

ABV – Alcohol by Volume

A measure of the alcohol content in the finished beer.

APA – American Pale Ale

A pale ale with the characteristics of the west coast US, heavily hopped giving a floral nose and citrus flavours.

DIPA – Double Indian Pale Ale

An Imperial American Pale Ale, similar to the above but only more so!

CAMRA – Campaign for Real Ale

Consumer organisation with 190,000+ members, protecting the interests of beer drinkers and pub goers.

EBC – European Brewing Convention

A measurement of the colour of beer.

EBU – European Bittering Units

Standard method of measuring bitterness in a given volume of beer.

EPA – English Pale Ale

A term hijacked to describe a low gravity beer with moderate bitterness but previously used to describe an Indian Pale Ale style beer destined for consumption in the UK.

ESB – Extra Special Bitter

A term sometimes used in describing a breweries premium bitter but forever associated with Fullers ESB which has won the Champion Beer of Britain a record three times.

IBU – International Bittering Units

See EBU, a standard system of measuring bitterness based on the parts per million content of alpha acids.

IPA – Indian Pale Ale

A historic term for the beers sent to the Indian Raj with a high alcohol and hopping rate to enable them to survive the long journey.

NABLABS – No Alcohol or Low Alcohol Beers

A term to describe the low alcohol beers sector.

OG – Original Gravity

The starting point for a beer prior to the commencement of fermentation.

PET – Polyethylene terephthalate

A type of plastic used to produce bottles for the cheaper end of the market, usually in 2 litre sizes.

SG – Specific Gravity

A measure of the density of beer compared to that of water when expressed as a ratio.

SIBA - Society of Independent Brewers

A trade body of smaller breweries, founded in 1980 representing the interests of the independent brewing sector.

SPBW – Society for the Preservation of Beer from the Wood

A forerunner organisation campaigning for beer to remain in wooden casks.

SRM – Standard Research Method

See EBC, a measure of the colour of beers when expressed in Lovibonds units.

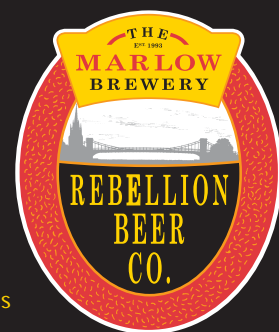
Hopefully this guide has been of some use and if you find others being used please remind people that plain English is always helpful!

PUB QUALITY BEER

...AT HOME

Drink Rebellion cask ale at home, fresh from the brewery shop

- Fresh beer, ready to drink
- 1 litre bottles up to 72 pint barrels
- Membership club with benefits including 10% OFF beer
- Fresh cider
- Local produce
- Over 300 worldwide wines
- Free glass hire



Shop opening hours:
Mon-Sat 8am-7pm

Call 01628 476594

Or visit our website:

www.rebellionbeer.co.uk



@RebellionBeer



RebellionBeerCo



Rebellion Beer Co. Ltd. Bencombe Farm, Marlow Bottom, SL7 3LT

A HISTORY OF BEER ADVERTISING

Beer is still Britain's favourite alcoholic beverage by far; we drank 8.5 billion pints last year versus a comparatively meagre 7.4 billion 175ml glasses of wine. Not surprisingly then, beer advertising is big business. But actually, muses Anthony Springall, it always has been.

Ever since Roman times, when wayside taverns would hang a bush outside to advertise that they were open for food and drink, there has been advertising of beer.

But it was only in the 19th and early 20th centuries that breweries had grown to such a size that their products would be known outside their immediate area. From that point onwards, the advertising of brands would grow to such an extent that the slogans used would permeate the national consciousness and become catch phrases in their own right.

The brewers of the 18th century were expanding rapidly but were still limited to their distribution caused by poor roads and lack of transport. It was in this period that Dr Samuel Johnson wrote, on the sale of his friend Henry Thrale's brewery: "We are not here to sell a parcel of boilers and vats, but the potentiality of growing rich beyond the dreams of avarice." What better advertising than this?

In the 19th century with the coming of the railways and increased literacy, brewers were able to exploit these to the full. Local brewer Simonds of Reading, for example, used the railways to distribute its beers and used its red hop leaf symbol to advertise their wares. Other large brewers such as Allsops, Barclay Perkins and Whitbread started to expand and advertise nationally in newspapers and their adverts became well known. Bass Brewery and its iconic red triangle logo is particularly worthy of note, later becoming the very first brand name and logo to be registered under the UK's Trade Mark Registration Act of 1875. So famous was the Bass red triangle that it was used in the painting *A Bar at the Folies-Bergère* by the impressionist painter Manet (See below).

In the 20th century, brewers used posters, beer mats and pottery to advertise their beers and some of these, such as used by Guinness, became iconic. The first poster to declare "Guinness is good for you" appeared in 1929,



based upon the belief at the time that the beer contained health giving properties. (How many years ago was it that nursing mothers were offered a Guinness on the NHS?). The posters of John Gilroy from 1930 to the middle 1960s created an advertising campaign that is remembered almost 80 years later, showing examples of strong men in the early years developing into surreal situations with a zoo keeper and various animals.



Perhaps surprisingly, it was the copywriter Dorothy L Sayers (better known as a prolific author of detective novels) that changed a pelican into a toucan to create a character that can still be found in pubs and clubs across the land.

It was the advent of television - and particularly commercial television in 1955 - that really upped the stakes in brewery advertising. Brewers could now create adverts that could appeal to their target market with characters specifically chosen. The first really big TV campaign in the mid 1960s was for Mackeson fronted by Bernard Miles who declared, "It looks good, tastes good and by golly it does you good". At the time it was Whitbread's biggest selling beer. Although now a "ghost brand" with no advertising or promotion, it's still in production at 2.8% abv.



Other brewers quickly caught on to the power of advertising, and from the 60s to the 90s large advertising agencies such as Saatchi & Saatchi would try to invent slogans to ensure their clients' sales increased, with such offerings as "refreshes the parts other beers cannot reach" and "reassuringly expensive", both of which were the brainchild of Anthony Simonds-Gooding.

During this heyday of beer advertising, all manner of claims were made by real and imaginary characters, all putting over the message that you should drink their particular brand.

Now, the advent of Social Media has meant that brewers have had to change the way they advertise. They must now 'target' advertise rather than use the blanket approach of old. So will we ever see the same level of catch phrases ring in our collective ears? I wonder. In the meantime, I'm off to follow the bear, and maybe roll out a barrel or two!

FOLLOW US & LIKE US ON SOCIAL MEDIA



Slough, Windsor & Maidenhead CAMRA
Maidenhead Beer & Cider Festival



@swmcamra
@MaidenheadBeer



Maidenheadbeerandcider

THE POWER OF ADVERTISING IT'S QUIZ TIME!

See how many of these you can remember (and yes you can confer!)

- 1) What beer claimed to "work wonders"?
- 2) What was "probably the best beer in the world"?
- 3) Which brand had the catchphrase "Gertcha"?
- 4) Which beer was described as "Amber Nectar"?
- 5) Australians wouldn't give a XXXX for what?
- 6) Which brand had you "following the bear"?
- 7) "Good things come to those that wait" advertised what?
- 8) Which beer "refreshes the parts other beers cannot reach"?
- 9) Which brew was being advertised with "I am only here for the beer"?
- 10) Which beer was "reassuringly expensive"?
- 11) "I bet he drinks" what beer?
- 12) Which beer was the "Cream of Manchester"?
- 13) Name the beer "Its what your right arms for"?
- 14) Which beer was "The pint that thinks its a quart"?
- 15) Which brewer encouraged you to "Roll out the barrel"?
- 16) Which beer stayed "sharp to the bottom of the glass"?

Answers? See page 28

THE VANSITTART ARMS WINDSOR



Welcome to our Traditional English Pub with a lovely winter
ambiance and a large beer garden!

We serve delicious, home cooked food 7 days a week and
breakfasts at weekends

Functions catered for
Children and dogs welcome

Opening Hours

Mon - Wed 12pm - 11pm, Thurs 12pm - 11:30pm
Fri 12pm - 12am, Sat 10:30am - 12am & Sun 10:30 - 11pm

The Vansittart Arms, 105 Vansittart Road
Windsor, Berkshire, SL4 5DD
Call: 01753 865988 www.vansittartarmswindsor.co.uk

Marlow Beerfest

Friday, 29th May, 4pm to 10pm
Saturday, 30th May, midday to 10pm
Sunday, 31st May, midday to 4pm

Over 30 Beers & Ciders
Gin Bar, Live Music & Hot Food

Entry £5 including beer guide and souvenir glass
£3 for Concessions, and MFC or CAMRA members

@marlowbeerfest
www.marlowbeerfest.co.uk
info@marlowbeerfest.co.uk

Marlow Football Club
Oak Tree Road, Marlow, Bucks, SL7 3ED



THE acre FREEHOUSE

*Situated in the heart of Windsor town centre,
The Acre is all you would expect from a 'proper
pub' with cask ales, great wines, a warm
friendly atmosphere and more.*

Donnelly House, Victoria Street,
Windsor, Berks. SL4 1EN
Tel: 01753 841083
www.theacrewindsor.com



KARAOKE EVERY FRIDAY NIGHT

TOP CLASS MUSIC IN THE LOUNGE BAR EVERY SATURDAY NIGHT

ALL MAJOR SPORTING EVENTS SHOWN

FRESHLY MADE COFFEE AVAILABLE ALL DAY ALONG WITH HOME MADE BAR SNACKS

CELLAR BAR AVAILABLE FOR PRIVATE HIRE



We have wheelchair access, baby changing and disabled facilities.

The Acre is also home to The Windsor & District Liberal Club, Strong Vibes, Power Plates and health & beauty salons.

The Lounge Bar has two 80-inch Screens for Live Sport



The Cellar Bar also has an 80-inch Screen and hosts regular live jazz and blues music nights.
It's a great venue for Private Parties.

Our Cellar has the latest state-of-the-art Dispense System ensuring super-chilled beers straight to the Bar!



CAMRA MEMBERS RECEIVE 15% DISCOUNT ON ALL DRINKS!

CHAMPION BEER

Blackheath Stout named Champion Winter Beer



Fixed Wheel Brewery has scooped gold in CAMRA's Champion Winter Beer of Britain competition, held on the first day of the Great British Beer Festival Winter which took place on February 4-8 in Birmingham.

Following more than a year of local tasting panels and regional heats, Fixed Wheel Brewery's Blackheath Stout was named overall champion, with beer writer Roger Protz describing it as 'a very fine example of a stout'. "We were all very impressed by its rich malty flavour, its fruity hop aroma and the overall flavour of the beer," he said.

Available all year in cask and keg, Blackheath is a full-bodied fruity stout dedicated to the home of Fixed Wheel's Blackheath brewery. It is brewed with New Zealand and English hops to give an oaky bitterness and dark fruits finish.

Runners up include Elland brewery's 1872 porter (silver) and Hawkshead Brodie's Prime Export (bronze).

Scott Povey, who owns Fixed Wheel Brewery alongside his partner Sharon, said: "I'm just really shocked. It's amazing news for us, fantastic! Blackheath Stout is the first beer we brewed, and is named after where we're based. We're really pleased to see it get the recognition it deserves –



we'll probably have to brew it a bit more now! Thank you to all the judges for voting for us."

Gary Timmins, CAMRA's National Director responsible for the competition, said: "Congratulations to Fixed Wheel for winning the Champion Winter Beer of Britain award, which is one of the highest accolades in the beer world.

"I would like to thank all the judges for their hard work and commend the brewers on the high quality of beers tasted. It was a very close competition and a well deserved win!"

This year's gold, silver and bronze awards will now go through to the finals of the Champion Beer of Britain competition.

CHAMPION WINTER BEER OF BRITAIN WINNERS

OVERALL

GOLD

Fixed Wheel's Blackheath Porter

SILVER

Elland's 1872 porter

BRONZE

Hawkshead's Brodie's Prime Export

BARLEY WINE STRONG OLD ALES

GOLD

Hawkshead, Brodie's Prime Export

SILVER

Exmoor's Beast

BRONZE

Lacons' Audit Ale

OLD ALE/STRONG MILDS

GOLD

Loddon's Hocus Pocus

SILVER

Brunswick's Black Sabbath

BRONZE

Tintagel's Caliburn

PORTERS

GOLD

Elland's 1872 porter

SILVER

Fownes' King Korvak's Saga

BRONZE

Colchester's Old King Coel London Porter

STOUTS

GOLD

Fixed Wheel's Blackheath Stout

SILVER

Barngates' Goodhew's Dry Stout

BRONZE

Plain's Inncognito

CROSSWORD ANSWERS



Kirsten, Mark & Darren welcome you to the

ROYAL STANDARD

at Wooburn Common

OPEN ALL DAY EVERYDAY

**AYLESBURY VALE &
WYCOMBE CAMRA
PUB OF THE YEAR 2018**

**NATIONAL PUB OF THE YEAR
AWARD 2016**

Wooburn Common Road, Wooburn Common,
High Wycombe, Bucks, HP10 0JS
Tel: 01628 521121

CHECK OUT OUR WEBSITE

THE PERSEVERANCE

4 Quality Cask Conditioned Ales

Home Cooked Food

Dogs Welcome

Open Fires

Live Music Every Sunday from 4pm

SWM Cider Pub of the Year 2017



ANNUAL SPRING BEER FESTIVAL
13th - 15th March



ANNUAL SUMMER BEER FESTIVAL
19th - 21st June



2 High Street, Wraysbury. TW19 5DB

01784 482 375

www.ThePercy.co.uk

The Craufurd Arms



Your Pint-Sized Community Pub

Why not drop into Maidenhead's first community owned pub for a drink and a chat? It's only a twelve minute walk up the Marlow Road

Real Ales & Ciders • Premium Lagers • Wines & Spirits
Secret Patio Garden • Friendly Atmosphere
TV Sports • Quiz Nights & Live Entertainments
Child & Dog Friendly • Local Charity Events

SWM
CAMRA BRANCH
PUB OF THE YEAR
**2018 &
2019**

15 Gringer Hill, SL6 7LY

Tel No. 01628 675410

www.craufurdarms.com

BINGHAMS BREWERY

Keeping up with the tradition of Bingham's brewing darker ales, our lovely new **Chocolate Porter** at 5% will be hitting a bar near you soon! V Old, also at 5%, will follow.

The Hop Project is currently **Ekuanot Centennial** and the flavour of these hops is lemon and lime. Refreshingly tasty at 4.5%.

On the personnel side, Bingham's are sad to announce that our brewer, Ricky Moysey, has decided to take a break from the brewing world. We wish him all the very best for the future. On a happier note Owner and Head Brewer Chris Bingham and Michelle are very proud parents, as we welcome the beautiful labradoodle puppy Cheddar to the brewing team! We're not sure how she will follow Stout with regard to having her own beer named after her, but you never know!

With spring and the warmer days around the corner, why not treat you or a friend to a **brewery tour**? Vouchers for tours can be purchased from the shop or online via the website (see below).

Brewery Tours

Ever wondered what goes on at a brewery? What is real ale made of? What are the raw ingredients? How do you turn the raw ingredients into beer? What is the difference between cask conditioned ale, real ale and keg beer? What is a firkin? Get all these questions answered (and more) on a pre-booked brewery tour round Bingham's Brewery.



Bingham's tours last around 1 hour 45 minutes and include:

- Three pints of real ale
- A Bingham's pint glass to take home
- The history of the brewery and director Chris Bingham's brewing background
- The ingredients that go into beer
- The process that the ingredients go through to become beer
- A walk around the brewery to see all the equipment and casks used in the brewing process

t.01189 344376

www.bingham.co.uk

CHILTERN BREWERY

2020 is set to be a big year at The Chiltern Brewery as the second-generation family run brewery enters into their **40th year of brewing!**

The Chiltern Brewery started the decade by releasing the limited edition Chiltern Ruby in cask, which proved hugely

popular both at The Brewery Shop and the brewery tap, The King's Head in Aylesbury. Needless to say, the beer was named after The Chiltern Brewery's 40th Anniversary milestone this year. Throughout the year the brewery will be releasing a number of **limited edition brews** that celebrate what the brewery has become best known for - reviving traditional styles of beer and pioneering new ones. If you haven't already, make sure to visit their brewery shop and pick up a copy of their 2020 beer calendar.

Another exciting development at The Chiltern Brewery's shop in Terrick is the installation of keg lines so visitors can enjoy the brewery's growing range of **keg beers - Chiltern Craft Lager, Golden Harvest and Chiltern Black**. Head Brewer Tom Jenkinson told us that: "The keg lines are another excellent page in the story of The Chiltern Brewery. We have always been proud to offer our customers a wide range of award-winning ales and are even prouder that we can offer them a greater choice of dispense method too."

During conversation, Tom also told us about the brewery's 40th Anniversary Celebration Ale, available exclusively in bottle. "For this **limited edition sparkling ale**, we have used only the finest British malts along with Olicana and Bramling Cross hops to brew a smooth, fruity and powerful IPA that is the ideal replacement for champagne at any special occasion," he said. "We have only released 1,000 bottles, so make sure to get your hands on one whilst they're still available!"

t. 01296 613647

www.chilternbrewery.co.uk

CRAZY DAVE'S CIDER

If you don't have time to visit the brewery at Oak Tree Farm, Gays Lane, Holyport, you can find Crazy Dave's Cider at local markets.

- Windsor Farmers' Market - 1st Saturday of the month
- Queen's Park Farmers' Market - 1st Sunday of the month
- Ealing Farmers' Market - 2nd Saturday of the month
- Maidenhead Farmers' Market - 2nd Sunday of the month
- Abingdon Farmers' Market - 3rd Friday of the month
- Reading Farmers' Market - 3rd Saturday of the month
- Ascot Farmers' Market - 3rd Sunday of the month
- Henley on Thames Farmers' Market - 4th Thursday of the month
- Beaconsfield Farmers' Market - 4th Saturday of the month
- The Food Market, Chiswick - 4th Sunday of the month

www.crazydavescider.co.uk

MOOGBREW

The Moogbrew Taproom reopened in February following some improvement works during the winter months, and will



be open alternate weekends for the remainder of the year. Please check the website (see below) or social media for confirmed dates and opening times, which may vary. The taproom now has two covered outdoor seating areas, the second of which is almost wholly enclosed, with glass panels overlooking the garden. A

wood burning stove is due to be added shortly to provide cosy winter comfort too.

The brewery already dispenses about 80% of its brewing capacity through the taproom and this seems likely to increase towards 100% by the end of this year, with only a handful of beers reaching local beer festivals or bars.

The latest addition to the Moogbrew range is a 5.8% New England-style IPA, featuring punchy tropical aromas from Citra, Galaxy and Vic Secret hops. The second batch of the popular Ma Bunny's Barley Wine has already been brewed and will be available in bottle later in the year, following a long maturation period.

e.info@moogbrew.co.uk
www.moogbrew.co.uk

REBELLION BEER COMPANY

The story of the Rebellion Brewery starts with two friends, Tim Coombes and Mark Gloyens. Attending school together in Marlow at a time when the old Wethered Brewery was in full production, the sweet aromas of malt were a constant reminder that Marlow was an active brewing town. Years later, Tim and Mark discussed the possibility of a joint business venture, and with the closure of the Wethered Brewery in 1987, the idea of starting a new brewery and reviving Marlow's brewing tradition was born. After a couple of years researching, planning, and several admirable attempts to reinstate a brewery on the original Wethered site, the Rebellion Brewery was eventually established on the Rose Industrial Estate in Marlow Bottom in April 1993. In 1999 the brewery moved to its current location on Bencombe Farm, occupying the old grainstore and other redundant farm buildings.

Since 1999 the Rebellion Brewery has made significant improvements to its site and equipment, enabling the development of an increasingly diverse beer range which includes draft and bottled ales, lager, porter and wheat beers. These beers are popular not only in pubs within the 30 mile delivery range but in the large on-site brewery shop.

Using premium ingredients, traditional methods and embracing modern technology, Rebellion will continue to develop and produce a wide range of fantastic tasting, quality beers.

Rebellion's Beers In addition to the extensive core range, monthly beers in 'Roger's Sporting Series' include:

April - Trick Shot. 4.2%. Copper and quaffable.

May - Square Leg. 4.2%. Pale amber and hoppy.

June - Red Card. 4.2%. Golden and vibrant.

The Spring Seasonal is **Amber**, a malt forward and full bodied best bitter with biscuit and caramel notes. At 4.3%, it is a rich amber in colour with classic a British hop character.

t. 01628 476594

www.rebellionbeer.co.uk

SIREN CRAFT BREWERY

The Tap Yard is our brewery bar, showcasing a selection of core beers and specials on tap, along with a full range of cans and bottles that you can drink-in or take away. In addition we have a range of specially curated spirits, wines, soft drinks and snacks. We're family friendly and dog friendly!

Whether you're purchasing growler fills, takeaway can or bottle orders or drinking in, we accept cash and card.

OPENING HOURS

Wednesday: 12 - 8 (With 15% off growler fills!)

Thursdays: 12 - 8

Fridays: 12 - 9

Saturdays: 12 - 9

Sundays: 12 - 8

CAMRA MEMBERS' DISCOUNTS

- Acre, Windsor - 10% OFF Ales
- Maiden's Head, Maidenhead - 10% OFF pints of ale, not halves
- Off The Tap, Maidenhead - 10% OFF cask ales
- Thatched Cottage, Cox Green - 10% OFF ales
- Wheatsheaf, Slough - 10% OFF ales
- The George, Eton - 20p off a pint of real ale.

Plus, we understand that Chef & Brewer pubs are offering 10% OFF ales, and that covers:

- Ethorpe Hotel, Gerrards Cross
- Feathers, Taplow
- Red Lion, Shreding Green, Iver
- Royal Oak, Farnham Common
- Shire Horse, Littlewick Green.

If any pub or club would like to offer discounts, please email the details to be included in the next issue to:

editor@swm.camra.co.uk

T&C's Apply

Pizza Our Pizza wagon serves freshly made to order pizzas from 12 - 7 on **Wednesday, Thursday and Friday.**



Street Food Weekends We invite a variety of awesome food vendors in every Saturday and Sunday throughout the year. During colder months, they will generally bit set up in our heated indoor Warehouse Garden. Check out what's coming up:

MARCH

Sun 01 - Italian Street Food
Sat 07 - It's a Wing Thing
Sun 08 - Fink Street Food
Sat 14 - Rural Pie Co
Sun 15 - TBC
Sat 21 - Leona Knight Catering
Sun 22 - Genbu
Sat 28/Sun 29 - TBC

APRIL

Sat 04 - Italian Street Food
Sun 05 - It's a Wing Thing
Sat 11 - Rural Pie Co
Sun 12 - John The Greek
Sat 18/Sun 19 - TBC
Sat 25 - Leona Knight Catering



t. 01189 730929

www.sirencraftbrew.com

WEST BERKSHIRE BREWERY

Ever wondered how we create our award-winning beers? Why not **join us for a tour** in our amazing new multi-million pound brewery! Meet the brewer and learn how the beer is made from the raw ingredients to the finished article and get up close to some of the most advanced brewing and packaging equipment in the country. Your ticket price includes an in-depth guided tour, two free pints and a voucher for 20% off in our brewery shop.



In our exclusive **Good Old Boys' Club**, members receive a 10% discount on all WBB beer purchases as well as a gift box containing a bottle of Good Old Boy and a unique glass tankard and polo shirt. Good Old Boys' Club evenings are held quarterly and are exclusive to members. You'll have the opportunity to taste new recipes and browse around the brewery, you can even bring a pal and both of you get three pints each. The hard part is deciding who the designated driver will be!

t. 01635 767090

www.wbbrew.com

WINDSOR & ETON BREWERY

The Brewery Tap continues to go from strength to strength. It has recently increased the number of draught beers available to 14 so that all options should be available all the time. In addition there is now a guest **Street Food option every Friday evening** and **Trivia Quiz nights on Mondays**. Of course in the Spring we show all the **England Rugby** games whilst still having the **tours every Saturday in between**.

BEER NEWS

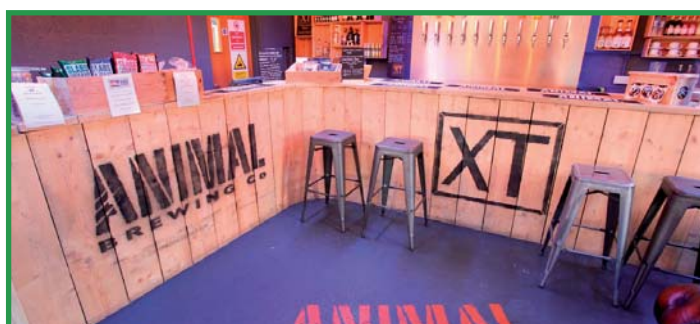
- **March - Last Drop** is available until the end of the 6-Nations rugby followed by **Kohinoor**, a 4.3% "Indies" Pale Ale that uses ingredients such as Jaggery raw cane sugar, Jasmine petals and a hint of coriander and cardamom for a touch of the exotic. March also sees the return of the ever popular **Eton Boat man** for its summer season.
- **April** – April sees the launch of a new beer **George** to celebrate both the St Georges day but more importantly the 10th anniversary of the brewery!
- **May** - Look out for **Hurricane**, being brewed again in good time for the VE celebrations at the end of the month.
- **Finally** - For visitors to the Taproom and shop of course there will be more special edition beers from the Trial kit including a **Banana Saison** and a **Trippel** along with our new draught **Stout Storm**.

Pub News The brewery recently secured the lease on the **Rose and Olive Branch** on Callow hill in Virginia Water. This ex-Greene King pub is being refurbished and should have opened by the time you read this. It will be able to serve a wide variety of the Brewery's products, so come and visit us – ideal for a country walk through the adjacent woods to get your thirst up!

10th Birthday Party To mark the 10 years since WEBREW's first brew we are organising a special week-end beer festival on the week-end of **24 – 25 April**. The last such festival was a huge success so come along and see what's in store. If you're a **Knight Club member** (the brewery have a club membership scheme with free drinking nights throughout the year) then a date for the diary – a special members' night is being arranged for 23 April.

t. 01753 854075
www.webrew.co.uk

XT BREWERY



The New Year sees a new pair of hands at the XT brewing helm with **Craig Bennett taking over as head brewer** from Vinny Rosario. Craig has over twenty years of experience in brewing, having worked at a number of breweries both big and small from around the country. He is a brewing graduate from Herriot Watt and qualified with the Brewing Institute Master Brewer Programme. Craig will be brewing the full range of **XT and Animal beers** while adding a few **speciality brews** of his own to the already extensive beer line up. Craig is passionate about cask beers and will be a great addition to the team at XT working to promote and develop the amazing range of beers in the XT portfolio.



After five years at XT, Vinny has now ironically moved up to Craig's old home town of Edinburgh to start his own brewing venture there. The new brewery will be called

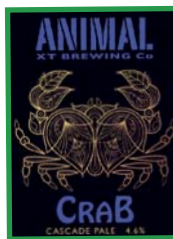
Origin Brewing and Vinny has teamed up with another former XT brewer, Fin Heslop, to develop a range of new beers which they expect to start flowing from their taproom in summer.



The new year has also seen a new bottle beer; **HopKitty** is now available in a bottle, but the cat has been at the cream and the bottle puss weighs in at 4.6%. The brewers wanted a more punchy version than the pub cat. Expect all the same great hop forward flavours but with longer claws

The Animal cask beers have been flowing as well with a brace of new wildlife:

The Water Buffalo – 4.6%. A Noble Amber - Packed with the most noble of hops and continental malts. Regal floral, orange and herbal flavours in the forefront with hints of black pepper, blackcurrant and spices dancing in the background. Finished off with biscuit notes for a delectable beer, proving that sometimes you can't beat old-school!



Crab – 4.6%. An artful but sideways look at a pale ale matched with a citrus twang from north American cascade hops.

t.01844 208310
www.xtbrewing.com

THE POWER OF ADVERTISING ANSWERS

And the answers are...

- 1) Double Diamond
- 2) Carlsberg
- 3) Courage Best
- 4) Fosters Lager
- 5) Castlemain
- 6) Hofmeister
- 7) Guinness
- 8) Heineken
- 9) Double Diamond (again)
- 10) Stella Artois
- 11) Carling Black Label
- 12) Boddingtons
- 13) Courage Tavern
- 14) Whitbread Trophy
- 15) Watneys Red Barrel (of course)
- 16) Harp Lager

BRANCH CONTACTS

Details of the local CAMRA Branch Officers.
Please make contact to discuss pubs, breweries
and anything relevant, you have a listening ear!

Chairman - Steve Goodall
chairman@swm.camra.org.uk

Vice Chairman & Festival Organiser - Allan Willoughby
vice.chairman@swm.camra.org.uk

Branch Secretary - Paul Beardsley
Secretary@swm.camra.org.uk

Treasurer - Michele Needleman
treasurer@swm.camra.org.uk

Branch Contact - Alan Molloy
branch.contact@swm.camra.org.uk

Membership Secretary - Bob Beauchamp
membership.sec@swm.camra.org.uk

Social Media Contact - Mark Newcombe
social.media.contact@swm.camra.org.uk

Social Secretary - Tracey Bottomley
social.sec@swm.camra.org.uk

Pub Protection Officer - Mark Newcombe
pub.protection@swm.camra.org.uk

Press Officer - Naomi Hayward
press@swm.camra.org.uk

Public Affairs Officer - Kevin Phillips
public.affairs@swm.camra.org.uk

Cider Representative - Nigel Vicker
cider.rep@swm.camra.org.uk

Pub Campaigns Co-Ordinator - Alan Molloy
pub.campaigns.co-ordinator@swm.camra.org.uk

Clubs Officer - Nick Wooldridge
clubs.officer@swm.camra.org.uk

CAMRA Angle Editor - Sean Ferris
editor@swm.camra.org.uk

Young Members Contact - Naomi Hayward
young.members@swm.camra.org.uk

Website Co-ordinator - Alan Molloy
website.coordinator@swm.camra.org.uk

Public Transport Co-ordinator - Ann Beauchamp
public.transport.coordinator@swm.camra.org.uk

GBG, LocAle & NBSS Coordinator - Ingvar Lagerstedt
localenbsscoordinator@swm.camra.co.uk



10TH BIRTHDAY BEER FESTIVAL

Join Windsor & Eton
Brewery in celebrating
ten years in the industry
with a weekend-long,
all inclusive beer
festival.

Beers from across
the country, street food,
music, and good
friends.

**Tickets and more
details at webrew.co.uk**

April 24th, 6-10pm
April 25th, 12-4pm, 5-9pm
All-in tickets from £27
Food not included in price
Non-drinker tickets available
Unit 1, Vansittart Estate,
Windsor, Berks, SL4 1SE

Join up, join in, join the campaign



Campaign
for
Real Ale

From
as little as
£26.50*
a year. That's less
than a pint a
month!

Includes
£30
Real Ale
Cider & Perry
Vouchers

Protect the traditions of great British pubs and everything that goes with them by joining today at www.camra.org.uk/joinup

Or enter your details and complete the Direct Debit form below and you will receive 15 months membership for the price of 12 and save £2 on your membership subscription

Alternatively you can send a cheque payable to CAMRA Ltd with your completed form, visit www.camra.org.uk/joinup, or call **01727 798440**. * All forms should be addressed to Membership Department, CAMRA, 230 Hatfield Road, St Albans, AL1 4LW.

Your details:

Title Surname
Forename(s)
Date of Birth (dd/mm/yyyy)
Address
..... Postcode
Email address
Daytime Tel

Single Membership (UK)

Under 26 Membership

Joint Membership

(At the same address)

Joint Under 26 Membership

Direct Debit

£26.50

£18

£31.50

£23

Non DD

£28.50

£20

£33.50

£25

Please indicate whether you wish to receive *What's Brewing* and *BEER* by email OR post:

What's Brewing
By Email ☐ By Post ☐

BEER
By Email ☐ By Post ☐

Concessionary rates are available only for Under 26 Memberships.

I wish to join the Campaign for Real Ale, and agree to abide by the Memorandum and Articles of Association which can be found on our website.

Signed

Date

Applications will be processed within 21 days.

Partner's Details (if Joint Membership)

Title Surname
Forename(s)
Date of Birth (dd/mm/yyyy)



Campaign
for
Real Ale

Instruction to your Bank or Building Society to pay by Direct Debit

Please fill in the whole form using a ball point pen and send to:
Campaign for Real Ale Ltd. 230 Hatfield Road St. Albans, Herts AL1 4LW



Name and full postal address of your Bank or Building Society

To the Manager Bank or Building Society

Address

Postcode

Name(s) of Account Holder

Bank or Building Society Account Number

Branch Sort Code

Reference

Service User Number

9 2 6 1 2 9

FOR CAMRA OFFICIAL USE ONLY

This is not part of the instruction to your Bank or Building Society

Membership Number

Name

Postcode

Instructions to your Bank or Building Society

Please pay Campaign For Real Ale Limited Direct Debits from the account detailed on this instruction subject to the safeguards assured by the Direct Debit Guarantee. I understand that this instruction may remain with Campaign For Real Ale Limited and, if so, will be passed electronically to my Bank/ Building Society.

Signature(s)

Date



This Guarantee should be detached and retained by the payer.

The Direct Debit Guarantee

- This Guarantee is offered by all banks and building societies that accept instructions to pay by Direct Debits
- If there are any changes to the amount, date or frequency of your Direct Debit The Campaign for Real Ale Ltd will notify you 10 working days in advance of your account being debited or as otherwise agreed. If you request The Campaign for Real Ale Ltd to collect a payment, confirmation of the amount and date will be given to you at the time of the request
- If an error is made in the payment of your Direct Debit by The Campaign for Real Ale Ltd or your bank or building society, you are entitled to a full and immediate refund of the amount paid from your bank or building society
- If you receive a refund you are not entitled to, you must pay it back when The Campaign Real Ale Ltd asks you to
- You can cancel a Direct Debit at any time by simply contacting your bank or building society. Written confirmation may be required. Please also notify us.

BINGHAMS

— BREWERY —

Brewery tours Saturdays @ 2pm book at binghams.co.uk/tours
Try our beer before you buy - Free Tasters!

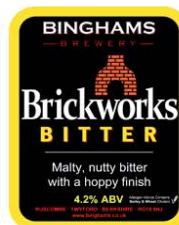
We pride ourselves on our friendly and honest service.

At the brewery shop on Tavistock Estate we have draught beer in take home packs from 1 to 20 litres & bottled beers, gift & tour vouchers, gift packs & T-shirts.

Brewery tours on Saturdays - bookable online

Open 10am-6pm Mon-Thu, 10am-7pm Fri, 11-5pm Sat

Unit 10 Tavistock Estate, Ruscombe Business Park
Ruscombe Lane, Ruscombe, nr. Twyford. RG10 9NJ
binghams.co.uk (0118) 9344376



£1 off Expires 31/05/2020

when you spend £15 or more at Bingham's Brewery Shop
MAPQ220 binghams.co.uk (0118) 9344376

Terms and Conditions

£1 off purchase price when you spend £15 or more in Bingham's Brewery Shop.
Not valid for use against home deliveries, online purchases or gift vouchers. Cannot be multiplied or exchanged for cash. Void if copied or transferred. One voucher per person per transaction. Not to be used in conjunction with any other offer including Bingham's Beer Club. You must be over 18 years old.

THE
BLACKWOOD ARMS
www.theblackwoodarms.co.uk

BURNHAM BEECHES
BEER FESTIVAL 2020
APRIL 23RD TO 26TH

WWW.THEBLACKWOODARMS.CO.UK

LIVE MUSIC
Sat eve 25th



TAPROOM + KITCHEN

WEST BERKSHIRE BREWERY

- EVENTS
- TOURS
- **REAL ALE**
- CRAFT BEER
- SHOP
- TAPROOM
- KITCHEN

OPENING HOURS

TUES - SUN | 10AM-11PM

MON | 10AM-6PM (Kitchen Closed)

SHOP OPEN DAILY 10AM-6PM



01635 767090

TAPROOMANDKITCHEN@WBBREW.CO.UK

WBBREW.COM    WESTBERKSBBREW

WEST BERKSHIRE BREWERY | THE OLD DAIRY | YATTENDON | RG18 OXT